

What to sow in June and July

Herewith you will find listed our colour charts of those Vegetable, Oriental Vegetables and Flower seed varieties that are suited for sowing in June and July and often onwards into the Autumn months

The individual notes under each picture will show you the months to sow them in. If you have a polytunnel or greenhouse the sowing season for many of the vegetables (especially the oriental varieties) may be extended and some will grow year-round. Please note that the sowing range, especially the vegetables varieties, shown is just for late sowing, so if you don't sow all the seeds, keep them and sow again in next Spring (see individual seed packets for details).

We have not listed all of the named varieties that can be sown in June and July, but most varieties listed under the type will be suitable. If sowing Beetroot, make sure to select globe varieties for the best results

As you will know, here at Mr Etty's emporium, we specialise in heritage varieties and many of the varieties we list here fall into that category. Some of Mr Etty's own favourites are described below.

Web-shop address <https://thomasetty.square.site>

Heritage Flower Seeds



Pansies (*Viola x wittrockiana*)

Lord Beaconsfield. Prior to 1883. *"The ground colour is purple-violet, shading off, on the top petals only, to a whitish hue."*

Ullswater. Prior to 1911. (Syn Thunersee, Lake Thun) *"The bluest of all blue pansies, rich ultramarine, with a dark blotch on each petal."*

See also: Alpenglow, Berna, Coronation Gold, Mont Blanc and Rheingold (all introduced prior to 191)

Sweet Williams (*Dianthus barbatus*)

Auricula-eyed. Hp. *"Dean's Auricula-eyed Sweet William, Most exquisite in form and colour."* Prior to 1865. *"Saved exclusively from the finest show varieties with rich colours and distinct white eye and margins."*

Holborn Glory. Hp. Prior to 1896. (D.I.) Gardening Illustrated. Vol. 17. *"Individual Flower the size of an (old) penny, with a well dented white smooth edge, & a large white centre, the flower trusses are a combination of raspberry-red & a pristine white ring borne on straight, stiff stalks easily grown from seeds."*

Newport Pink. Hp. Prior to 1911. The Practical Flower Garden. *"Spectacular clusters of clear pink flowers grace this dainty flower. A wonderful old-fashioned accent for the mixed border. Long stems so excellent for cutting."*

See also: Alba, Single Mix (by 1640) Double Mix (by 1665). and Nigrescens (by 1935).



Violas (*Viola cornuta*)

Admiration. Prior to 1867 *"An old established variety, 2" circular flowers in rich deep velvety purple with a darker bluish surround, darker veins & a yellow eye. It has a pansy leaf & a strong stem."*

Arkwright Ruby. Prior to 1923 *"Beautiful red blooms, accented with a bright yellow centre & deep purple coloured petal. To 6 - 8 ins."*

See also: Blue Perfection Chantreyland (by 1934) & Yellow Perfection

Wallflowers (*Cherianthus cherii*)

Fire King. Prior to 1911. *"Few Wallflowers have more telling colour than Fire King, which is a warm, bright salmon suffused with orange."*

Ruby Gem. Prior to 1895 (Syn. Purple Queen) *"The colour is a beautiful clear shade of Ruby- Violet, with a bluish satin-like sheen."*

Vulcan. Prior to 1900. *"A splendid variety, forming compact bushes covered with very large flowers of a rich dark madder-scarlet, an admirable groundwork to Yellow trumpet daffodils. To 9 in."*

See also Cloth of Gold (by 1919), Ivory White (By 1907) and White Dame (by 1906).



Heritage Vegetable Seeds

Beetroot; Burpee's Golden. Prior to 1857. Golden-yellow throughout. Turnip-rooted. Delicious. The advantage of this variety is that it does not bleed but retains all the flavour of the red beets.

See also: Albina Vereduna (by 1950), Bulls Blood (by 1900), Detroit (1891), Tonda di Chioggia (1841), Egyptian turnip-rooted (1874)

Borecole or Kale: Nero di Toscana. (Syn. Cavolo Nero & Black Kale) (D.I.) Praelectiones in Ordines Naturales Plantarum. 1792. "Up to 6ft. tall, terminating in a cluster of leaves, which are nearly entire on the borders, blistered on the surface & sometimes measuring 3ft in length."

See also: Dwarf Green Curled (1779), Hungry Gap (1928), Red Russian (1818) and Thousand-headed (1801)

Spring Cabbage: Mr Wheeler's Imperial. Before 1844. Raised by Mr G Wheeler of Warminster. Selected from "Nonpariel" cabbage, listed by W Rendle of Plymouth. "Dark green leafy heads, compact plants for harvesting from mid-April."

See also April (1897) and Durham Early (1932)

Carrot: Chantenay Red Cored. Prior to 1829. (Syn. Red Intermediate stump-rooted, Cannons Favourite.) "The roots are refined in appearance with small collars, evenly stumped with very small tails. The root surface is smooth & free from large eyes & side rootlets."

See also: Amsterdam forcing (1911), Early Market Horn (1953) & Paris Market (1875)

Kohl Rabi: Purple Vienna. Prior to 1849. Journal d'horticulture pratique de la Belgique. "The swollen stems & leaves of this strain are a purplish colour & the flesh an attractive light green. Roots of even size & form."

Lettuces: All-The-Year-Round. Manuel Complet du Jardinier &c. 1829. "Heads large, handsome & very solid, with broad, pale green leaves. Inner leaves beautifully blanched & of delicious quality, crisp & of the buttery character much liked."

Red Winter. (Syn. Rouge d'Hiver) Traité des végétaux 1805. "It has large, flat, broad leaves are sweet with a buttery texture. The colour varies from green to bronze to deep red."

See also Black-seeded Simpson (1878), Marvel of the Four Seasons (1880) & Winter Density (1909).

Radishes: Scarlet Globe. By 1881. "An early forcing variety which does equally well outside. Handsome in both form & colour."

Black Spanish Round. Prior to 1548. "The bulb is a regular pear-shaped. Grows 3 to 4" in diameter with a firm, white flesh and nearly black, thin skin."

See also French Breakfast (1865), Long White Icicle (1675?), Long Red (1859), Sparkler (1910), Black Spanish Long (1777) & Chinese Rose (1843)

Radicchio: Rossa di Treviso. Prior 1899. "An elegant plant with spear-shaped red leaves contrasting with wide white ribs. The leaves are delicious in salads; and the ribs used for risotto & soup."

See also Variegata di Castelfranco (1912)

Herbs

In addition to the varieties listed on the colour schedules the following herbs are suitable for sowing in June and July.

Basils, Chervil, Coriander, Dill, Lemon Bergamot, Lovage, Oregano Parsley and Wild Bergamot

Autumn sown? Why not take this opportunity to add any Broad beans or First Early peas you intend to plant to your order.

Aquadulce Claudia Broad bean and **Douce Provence** and **Meteor** peas are generally the best choice.

All of the above can be found and ordered in our web-shop. We are aware that occasionally the software does not accept certain addresses, we have no idea why this happens, but should you encounter this problem, or prefer to email your order, please do email us at sales@thomasetty.co.uk with your requirements and we will process your order and payment offline

Autumn Sown Veg - see next list for Oriental vegetable
An * next to the Vegetable type indicates that other varieties are listed in our web-shop



BEETROOT*

Bulls Blood
200 Seeds: Sow Jun-Aug



BEETROOT*

Burpee's Golden
100 Seeds: Sow Jun-Aug



BEETROOT*

Tonda di Chioggia
300 Seeds: Sow Jun-Aug



LEAF BEET or CHARD

Perpetual Spinach
300 seeds: Sow Jun-Aug



LEAF BEET or CHARD

Rainbow Chard
150 seeds: Sow Jun-Aug



LEAF BEET or CHARD

Rhubarb or Ruby
300 seeds: Sow Jun-Aug



LEAF BEET or CHARD

Swiss Chard
300 seeds: Sow Jun-Aug



BORECOLE or KALE

Hungry Gap
300 seeds: Sow Jul-Sept



BORECOLE or KALE

Nero di Toscana
300 seeds: Sow Jul-Sept



BORECOLE or KALE

Red Russian
300 seeds: Sow Jul-Sept



CABBAGE Spring

April
300 seeds; Sow Jul-Aug



CABBAGE Spring

Durham Early
300 seeds: Sow Jul-Aug



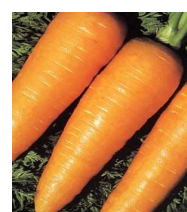
CABBAGE Spring

Wheeler's Imperial
300 seeds: Sow Jul-Aug



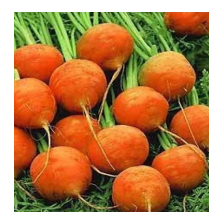
CABBAGE Spring

Wintergreen
100 seeds: Sow Jul-Aug



CARROT*

Chantenay Red-cored
2000 seeds: Sow Jun-Jul



CARROT*

Paris Market
2000 seeds: Sow Jun-Jul



CIME DI RAPA

Quarantina
300 seeds: Sow Jun-Sept



CORN SALAD*

Large-seeded
300 seeds: Sow Aug-Oct



ENDIVE*

Encornet de Bordeaux
300 seeds: Sow Jun-Aug



ENDIVE*

Pancalieri
300 seeds: Sow Jun-Aug



KOHL RABI

Purple Vienna
300 seeds: Sow Jun-Aug



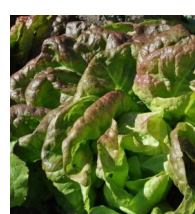
KOHL RABI

Superschmelz
300 seeds: Sow Jun-Aug



LETTUCE*

All the year round
1000 seeds: Sow Jul-Sept



LETTUCE*

Brown Winter
300 seeds: Sow Jul-Sept



LETTUCE*

Marvel of the 4 Seasons
1000 seeds: Sow Jul-Sept



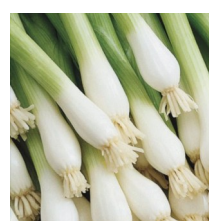
LETTUCE*

Red Winter
300 seeds: Sow Jul-Sept



LETTUCE*

Winter Density
1000 seeds: Sow Jul-Sept



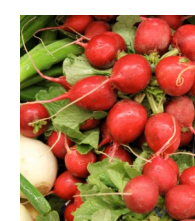
SPRING ONION

White Lisbon
300 seeds: Sow Jun-Aug



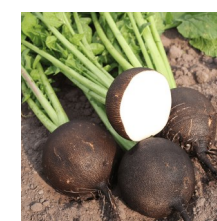
RADISH*

French Breakfast
300 seeds: Sow Jun-Sept



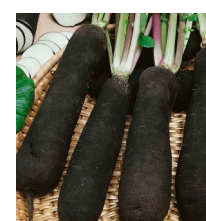
RADISH*

Scarlet Globe
300 seeds: Sow Jun-Sept



RADISH (Winter)*

Black Spanish Round
300 seeds: Sow Jul-Aug



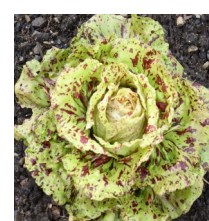
RADISH (Winter)*

Chinese Rose
300 seeds: Sow Jul-Aug



RADICCHIO*

Rossa di Treviso
300 seeds: Sow Jul-Aug



RADICCHIO*

Variegata di Castelfranco



ROCKET

Salad
1000 seeds: Sow Jun-Oct



ROCKET

Wild
1000 seeds: Sow Jun-Oct

Summer/Autumn Sown Oriental Veg



AMARANTH
Green Callaloo
200 Seeds: Sow Jun-Aug



AMARANTH
Red Callaloo
100 Seeds: Sow Jun-Aug



CHINESE CABBAGE
Michihili
300 Seeds: Sow Jun-Aug



CHINESE CABBAGE
Wong Bok
200 Seeds: Sow Jun-Aug



CHOPSUEY GREENS
Shungiku
200 seeds: Sow Jun-Aug



CHOY SUM
Green
100 seeds: Sow Jun-Aug



KAI LAN/GAI LAN
Chinese Broccoli
300 seeds: Sow Jun-Aug



KINTSAI
Chinese Celery
250 seeds: Sow Jul-Sept



KOMATSUNA
Mustard Spinach Green
300 seeds: Sow Jul-Sept



KOMATSUNA
Mustard Spinach Purple
100 seeds: Sow Jul-Sept



MIBUNA
300 seeds: Sow Jul-Aug



MITSUBA
Japanese Parsley
300 seeds: Sow Jul-Aug



MIZUNA
Green
300 seeds: Sow Jul-Aug



MIZUNA
Red Streaked
100 seeds: Sow Jul-Aug



MUSTARD (Oriental)
Giant Red
200 seeds: Sow Jun-Aug



MUSTARD (Oriental)
Golden Streaks
200 seeds: Sow Jun-Jul



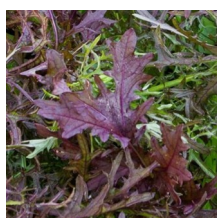
MUSTARD (Oriental)
Green in Snow
200 seeds: Sow Jun-Sept



MUSTARD (Oriental)
Osaka Purple
200 seeds: Sow Aug-Oct



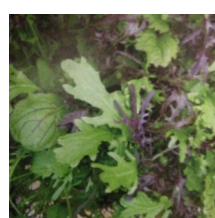
MUSTARD (Oriental)
Red Frills
200 seeds: Sow Jun-Aug



MUSTARD (Oriental)
Ruby Streaks
200 seeds: Sow Jun-Aug



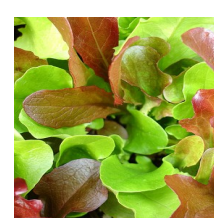
MUSTARD (Oriental)
Wasabina
300 seeds: Sow Jun-Aug



MUSTARD (Oriental)
Mix
300 seeds: Sow Jul-Sep



NAMENIA
300 seeds: Sow Jul-Sep



SALAD MESCLUN
Leafy Mix
300 seeds: Sow Jul-Sep



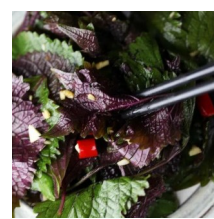
ORIENTAL MESCLUN
Mixed Leaves
300 seeds: Sow Jul-Sep



PAK CHOI
Green Stem
200 seeds: Sow Jul-Sep



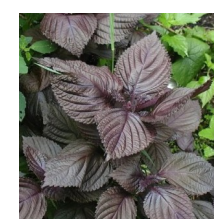
PAK CHOI
Canton White
200 seeds: Sow Jun-Aug



PERILLA/SHISHO
Mixed
100 seeds: Sow Jun-Sep



PERILLA/SHISHO
Green
100 seeds: Sow Jun-Sep



PERILLA/SHISHO
Purple
100 seeds: Sow Jun-Sept



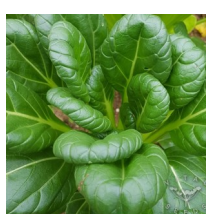
RADISH
Daikon/Mooli
200 seeds: Sow Jun-Sep



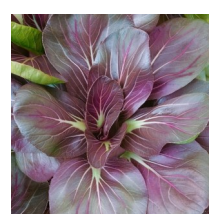
ROCKET
Wasabi
100 seeds: Sow Jul-Aug



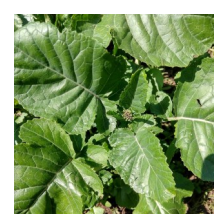
STEM LETTUCE/CELTUCE
Green
200 seeds: Sow Jul-Aug



TATSOI
Green
200 seeds: Sow Jul-Aug



TATSOI
Purple
200 seeds: Sow mid Aug



TEXSEL GREENS
Aka Garlic Kale
200 seeds: Sow mid Aug

Summer/Autumn Sown Flowers

An * next to flower type indicates that other suitable varieties are listed in our webshop (Prices vary see webshop)



FORGET-ME-NOT

Blue (Field)

500 Seeds: Sow Jun-Aug



FORGET-ME-NOT

White

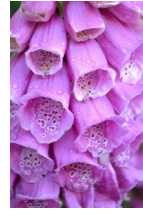
200 Seeds: Sow Jun-Aug



FORGET-ME-NOT

Mix

300 Seeds: Sow Jun-Aug



FOXGLOVE

Wild (Native)

500 seeds: Sow Jun-Aug



FOXGLOVE

White

500 seeds: Sow Jun-Aug



FOXGLOVE

Pam's Choice/Elsie
Kelsie



FOXGLOVE

Excelsior Hybrids

300 seeds: Sow Jun-Aug



FOXGLOVE

Foxy (Dwarf)

300 seeds: Sow Jul-Sept



FOXGLOVE

Apricot

500 seeds: Sow Jul-Sept



FOXGLOVE

Lutea

100 seeds: Sow Jul-Sept



HONESTY

70 seeds; Sow Jul-Aug



SWEET ROCKET

100 seeds: Sow Jul-Aug



SWEET WILLIAM

Single Mix (by 1640)

300 seeds: Sow Jul-Aug



SWEET WILLIAM

Double Mix (by 1665)

200 seeds: Sow Jul-Aug



SWEET WILLIAM

Auricula-eyed (by 1865)

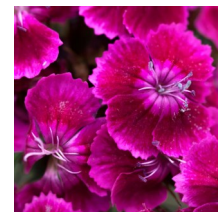
300 seeds: Sow Jun-Jul



SWEET WILLIAM

Alba/Albus

100 seeds: Sow Jun-Jul



SWEET WILLIAM

Oeschberg

100 seeds: Sow Jun-Sept



SWEET WILLIAM

Nigrescens (by 1935)

100 seeds: Sow Aug-Oct



SWEET WILLIAM

Holborn Glory (By 1891)

100 seeds: Sow Jun-Aug



SWEET WILLIAM

Newport Pink (By 1911_

100 seeds: Sow Jun-Aug



VIOLA CORNUTA*

Admiration (by 1867)

100 seeds: Sow Jun-Sep



VIOLA CORNUTA*

Arkwright Ruby (1935)

100 seeds: Sow Jul-Aug



VIOLA CORNUTA*

Heirloom Mix

100 seeds: Sow Jul-Aug



PANSY*

Lord Beaconsfield (1883)

100 seeds: Sow Jul-Aug



PANSY*

Alpenglow

100 seeds: Sow mid Aug



PANSY*

Ullswater (by 1911)

100 seeds: Sow mid Aug



PANSY*

Swiss Giant Mix (1917)

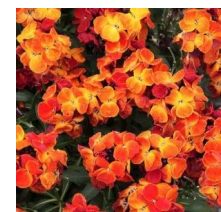
100 seeds: Sow mid Aug



WALLFLOWER

Cloth of Gold (By 1910)

300 seeds: Sow Jun-Aug



WALLFLOWER

Fire King (By 1911)

300 seeds: Sow Jun-Aug



WALLFLOWER

Giant Pink

300 seeds: Sow Jun-Aug



WALLFLOWER

Ivory White (By 1901)

300 seeds: Sow Jul-Sep



WALLFLOWER

Orange Bedder

300 seeds: Sow Jul-Sep



WALLFLOWER

Ruby King (By 1895)

300 seeds: Sow Jul-Sep



WALLFLOWER

Vulcan (By 1900) seeds:

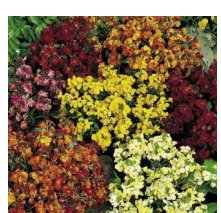
300 Sow Jul-Sep



WALLFLOWER

White Dame

300 seeds: Sow Jun-Sep



WALLFLOWER

Persian Carpet (By 1959)

300 seeds: Sow Jun-Sep